

THE TOURING MACHINE

INSTRUCTIONS

R = right B = read

L = left I = improvise

S = same E = everyone

Pianist plays for 15"
Reader reads for 15"
OS-1
IMMEDIATELY
HS-1
COUNT TO 3
CS-1
COUNT TO 7
OB
AFTER READING
HL-2
IMMEDIATELY
CL-2
IMMEDIATELY
OL-1
COUNT TO 7
CL-4
IMMEDIATELY
HL-3
IMMEDIATELY
OL-2
COUNT TO 7
HB
IMMEDIATELY
OL-5

IMMEDIATELY
CL-3
IMMEDIATELY
HL-2
COUNT TO 15
OL-2
IMMEDIATELY
HS-1
IMMEDIATELY
CL-1
COUNT TO 3
HL-2
IMMEDIATELY
CR-1
COUNT TO 3
HS-4
IMMEDIATELY
CL-4
IMMEDIATELY
OL-4
COUNT TO 15
CB
IMMEDIATELY
HL-4
IMMEDIATELY
OL-4
COUNT TO 10
HL-3
IMMEDIATELY
OL-3
IMMEDIATELY
CL-3

COUNT TO 15
OI
IMMEDIATELY
CI
IMMEDIATELY
HI
COUNT TO 5
CL-1
IMMEDIATELY
OL-1
IMMEDIATELY
HL-1
COUNT TO 5
OL-1
IMMEDIATELY
CL-1
COUNT TO 2
HL-1
COUNT TO 3
CR-1
COUNT TO 1
OS-1
COUNT TO 3
HR-1
COUNT TO 1
CL-1
COUNT TO 3
HL-1
COUNT TO 2
OR-1
COUNT TO 4
HS-3

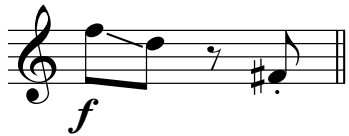
IMMEDIATELY
CS-3
IMMEDIATELY
OL-3
COUNT TO 15
EB
COUNT TO 5
OL-5
IMMEDIATELY
CL-4
IMMEDIATELY
HL-3
COUNT TO 12
EI
IMMEDIATELY
CL-4
IMMEDIATELY
HL-4
IMMEDIATELY
OL-4

The Touring Machine

Oboe

Deborah Broderick Edwards

A

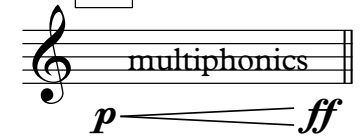


READ loudly:
My contention is that machines can be constructed which will simulate the behaviour of the human mind very closely.

B



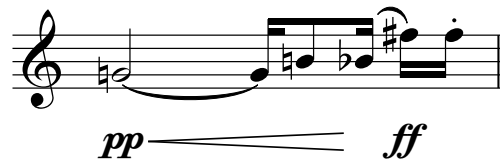
C



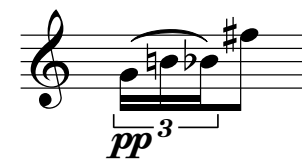
D



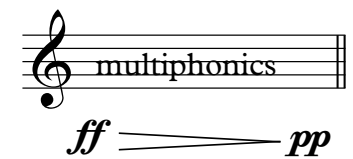
E



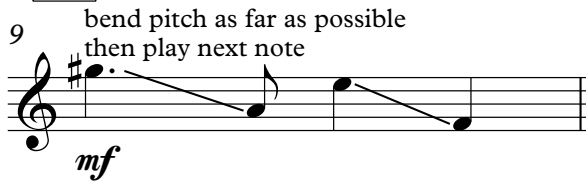
F



G



H



I

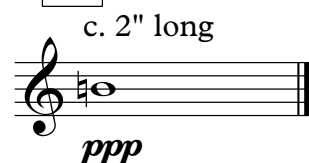


READ:
Let us suppose that it is intended that the machine shall understand English, and that owing to its having no hands or feet, and not needing to eat, not desiring to smoke, it will occupy its time mostly in playing games such as Chess and GO, and possibly Bridge.

J



K



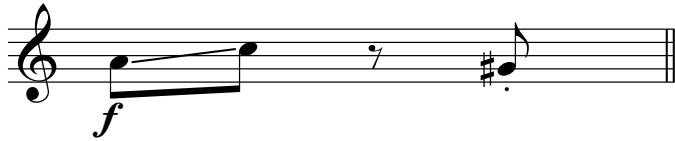
pp to fff (everyone will be reading, so change your dynamic level ad lib)

The Touring Machine

Tenor Horn

Deborah Broderick Edwards

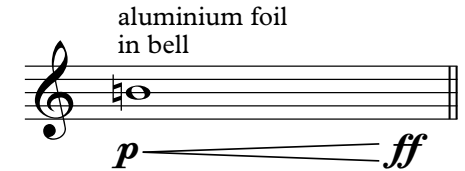
A



B

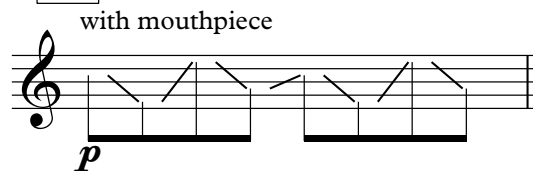


C

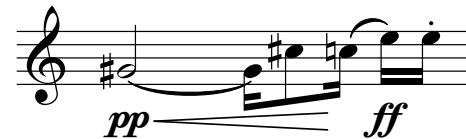


READ loudly:
It would be the actual reaction of the machine to circumstances that would prove my contention, if indeed it can be proved at all.

D



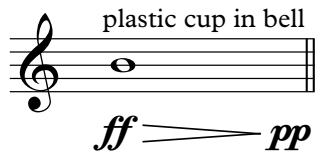
E



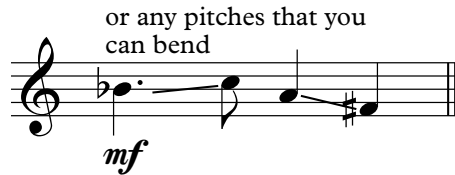
F



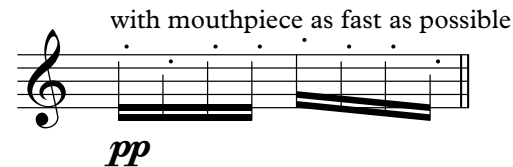
G



H



I



READ:
They will make mistakes at times, and at times they may make new and very interesting statements, and on the whole the output of them will be worth attention to the same sort of extent as the output of a human mind.

J



K



ppp to fff (everyone will be reading, so change your dynamic level ad lib)

The Touring Machine

cello

Deborah Broderick Edwards

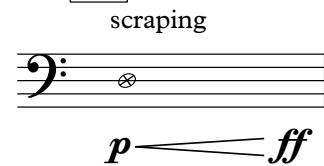
A



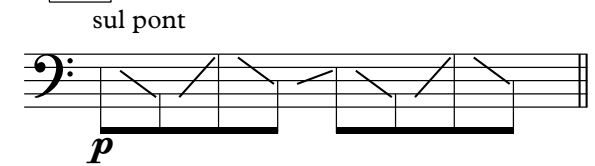
B



C



D



E



READ QUIETLY:

Let us go rather more carefully into the nature of this 'proof'. It is clearly possible to produce a machine which would give a very good account of itself for any range of tests, if the machine were made sufficiently elaborate.

G



H



I

sul pont as fast as possible



READ:

If this were the case there seems to be no real reason why one should not start from a comparatively simple machine, and, by subjecting it to a suitable range of 'experience' transform it into one which was much more elaborate, and was able to deal with a far greater range of contingencies.

J

molto lento e espressivo



K

c. 2" long



ppp to fff

(everyone will be reading, so change your dynamic level ad lib)